

Creacel

3 cm

3 cm

Page 1

ROBE A PLI CREUX

Valeurs de couture comprises

—————	Taille 36
.....	Taille 38
- - - - -	Taille 40

Creacel

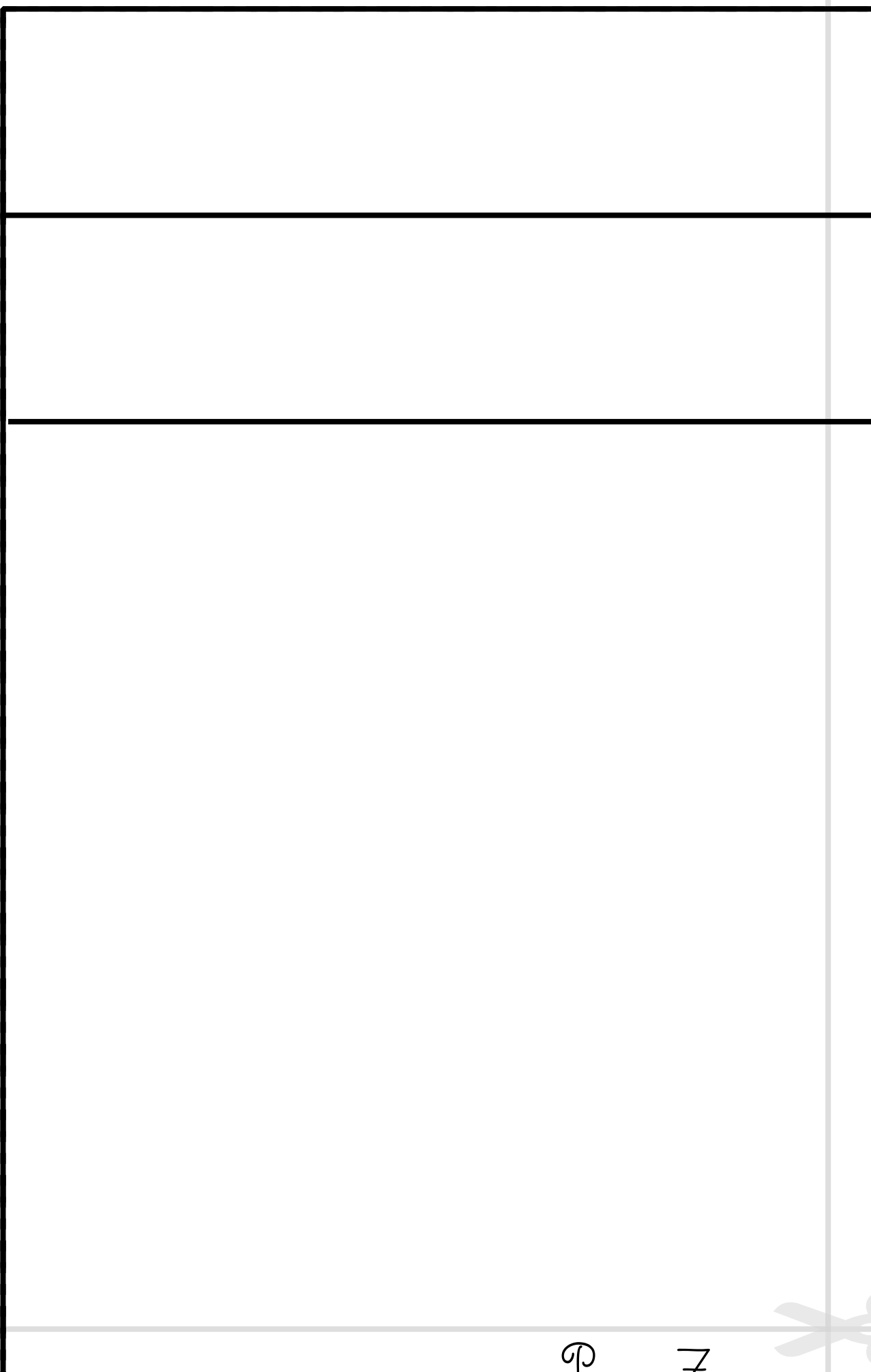
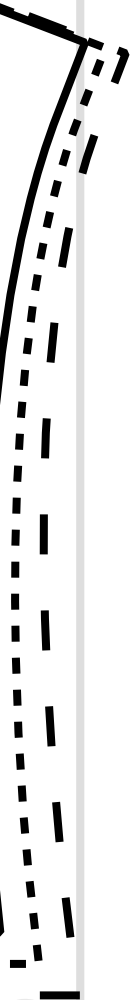
ROBE A PLI CREUX

2

Empiècement dos

Coupez 1x dans la
pliure du tissu

1





Creacel

ROBE A PLI CREUX

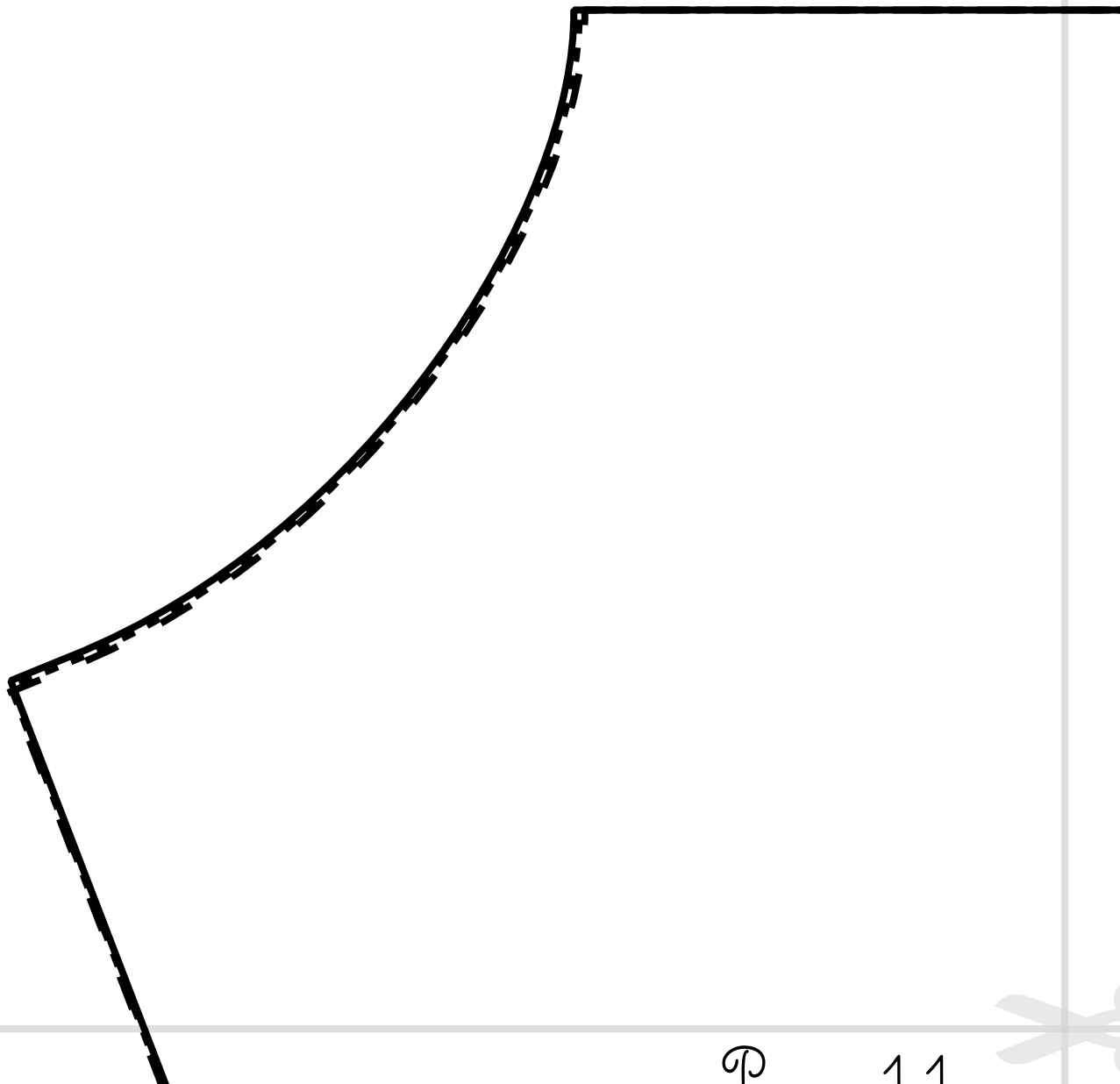
3

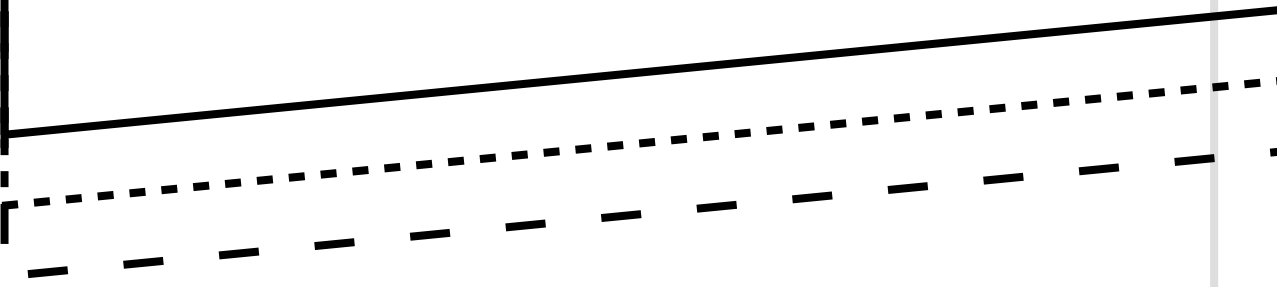
Dos

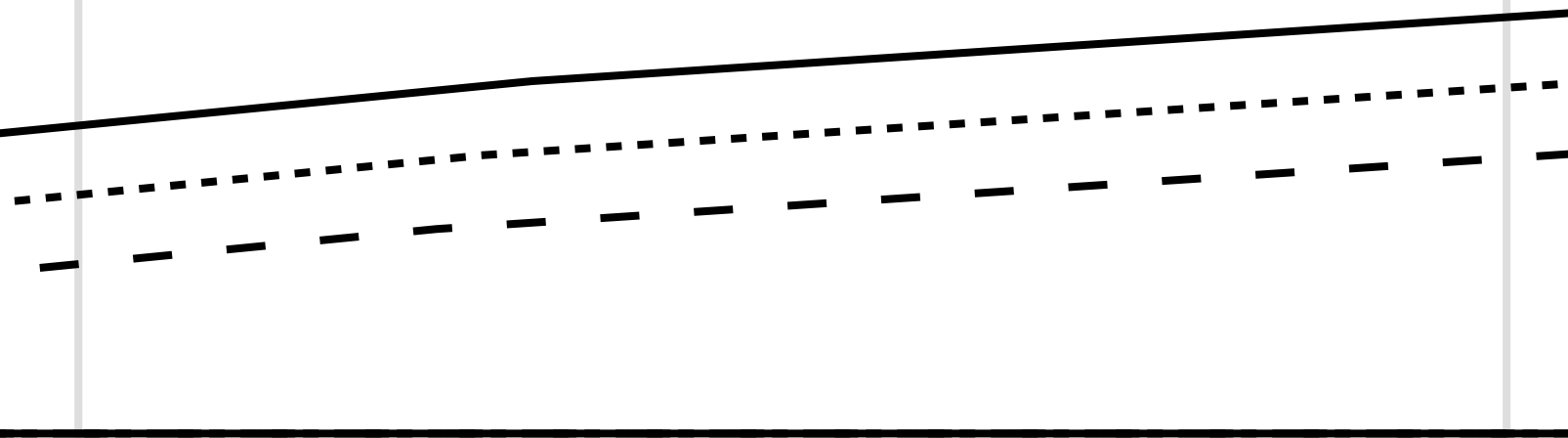
Coupez 2x dans le tissu
ou 1x dans la pliure











Creasel

ROBE A PLI CREUX

1

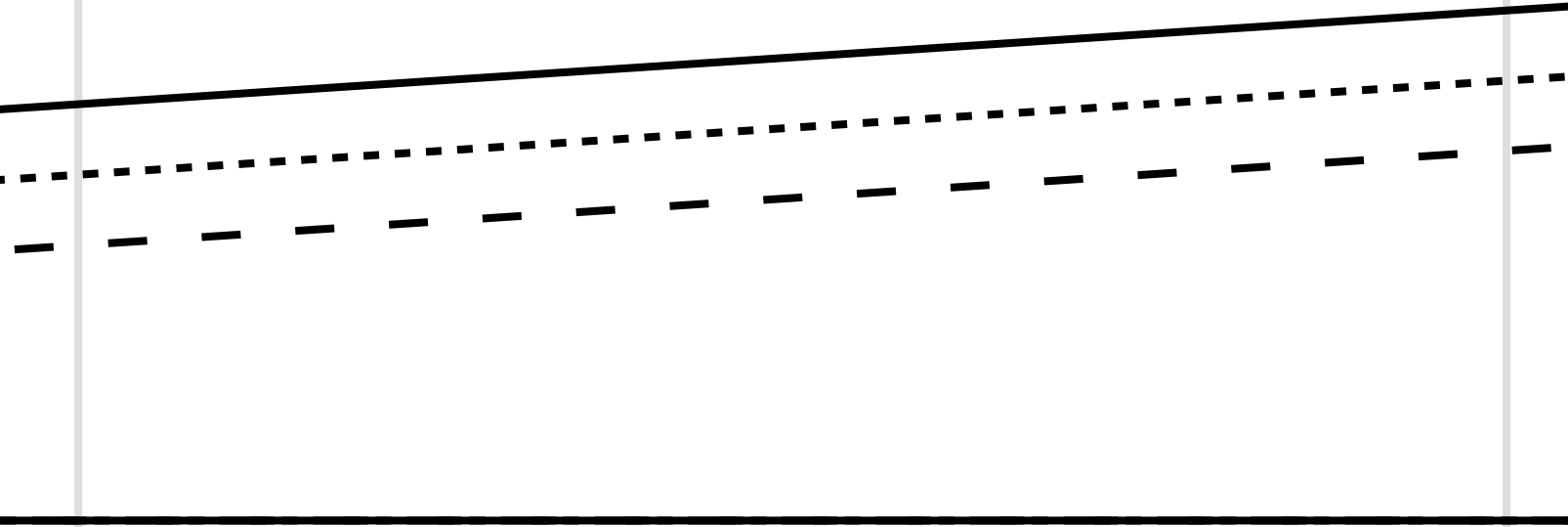
Devant

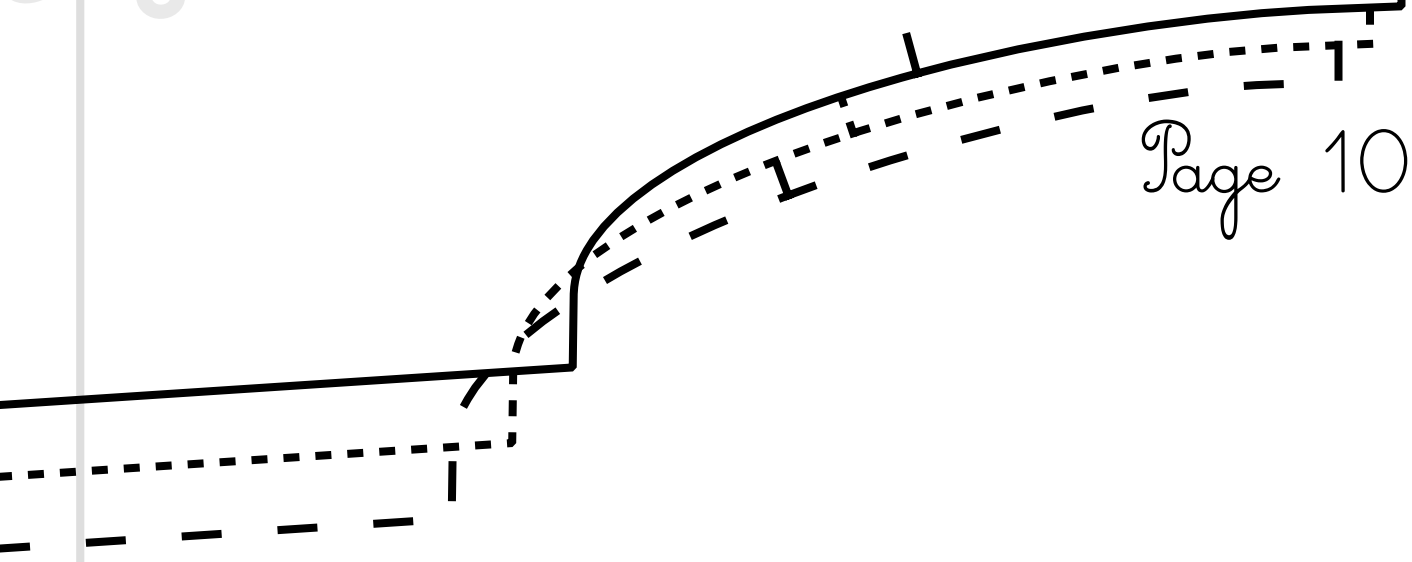
Coupez 1x dans la

plis du tissu

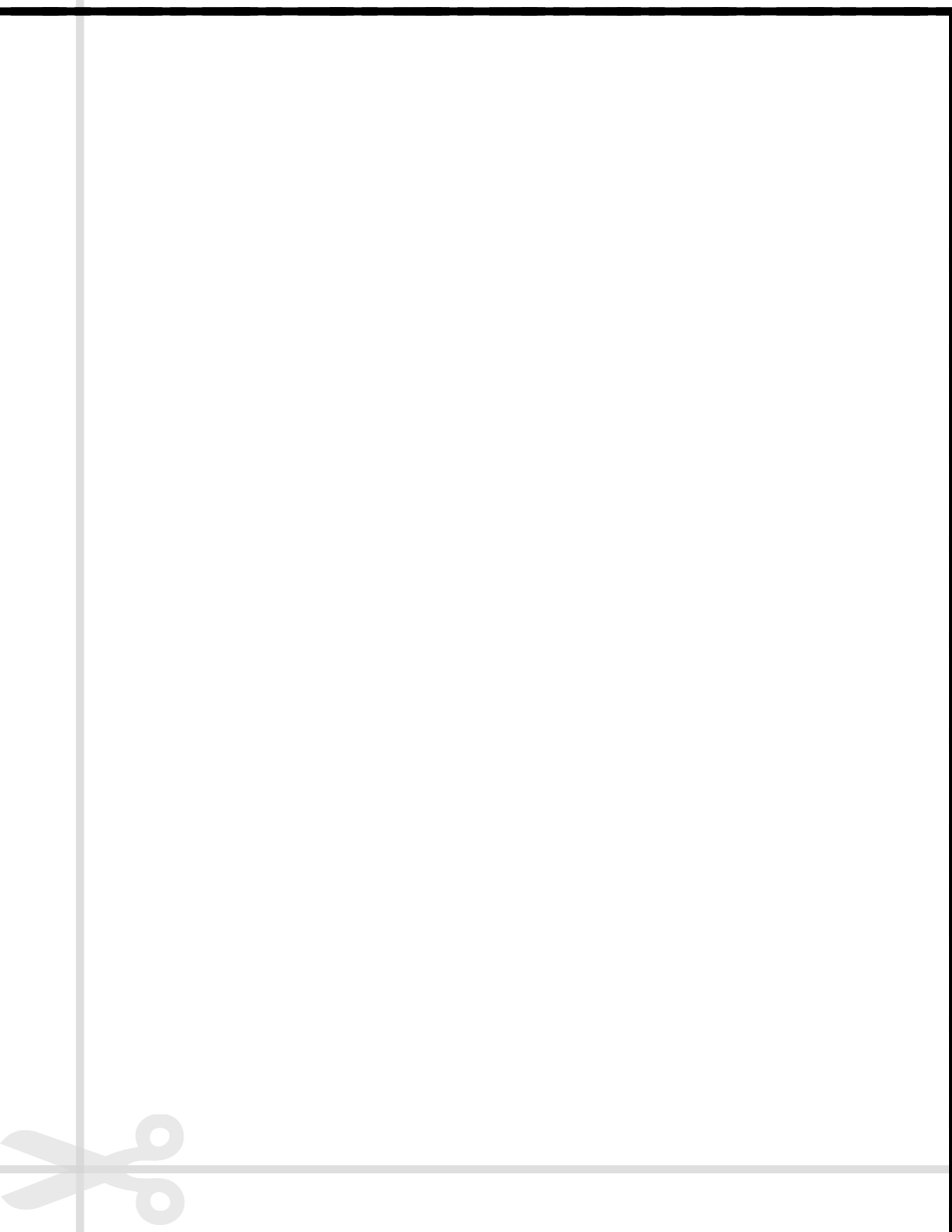
Ⓟ

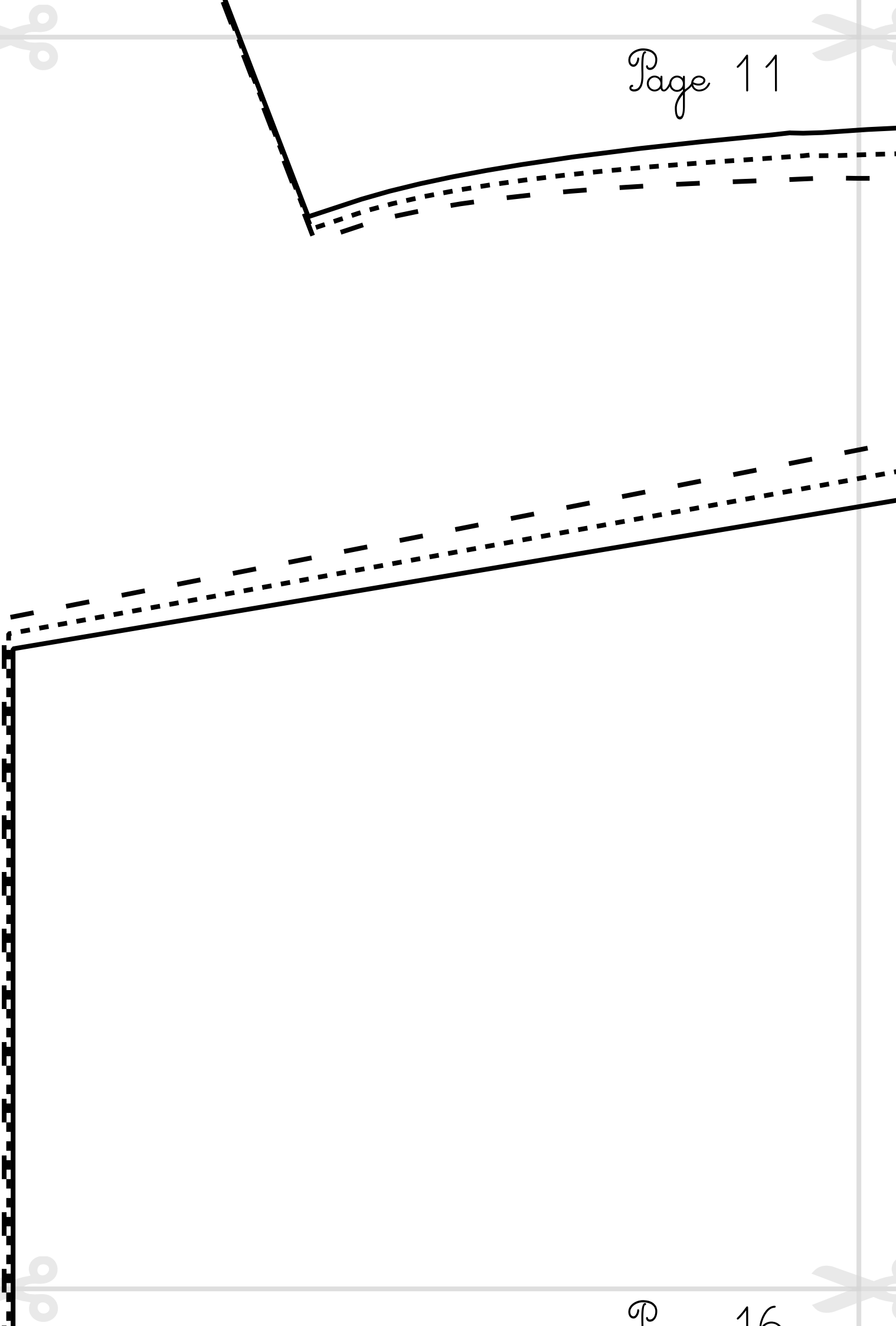
12

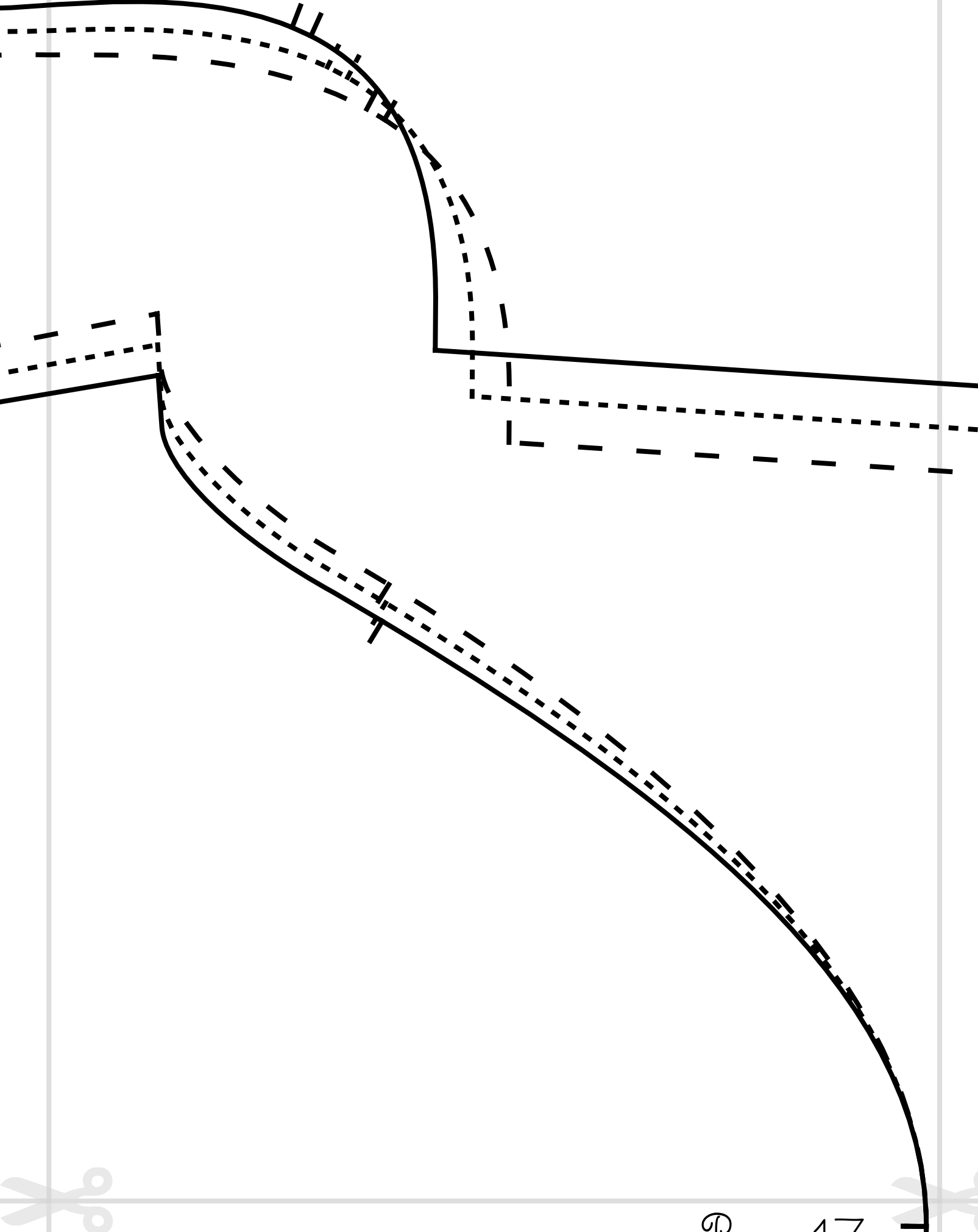




Page 10



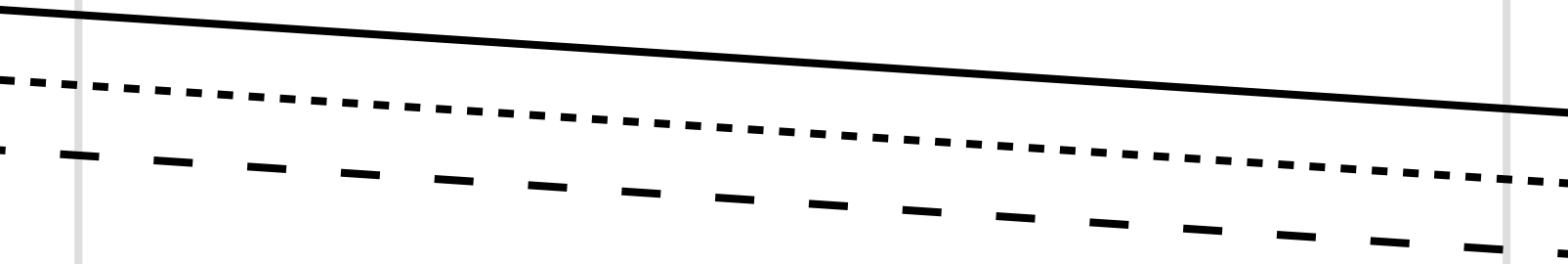


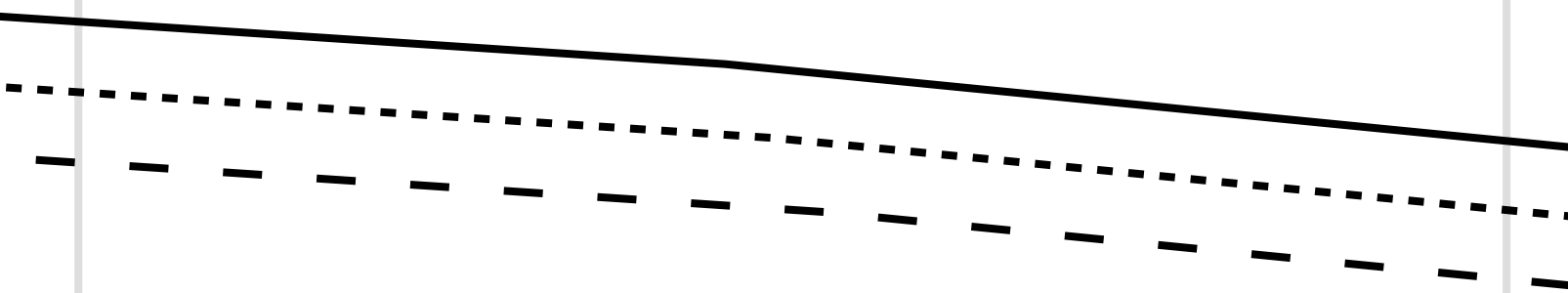


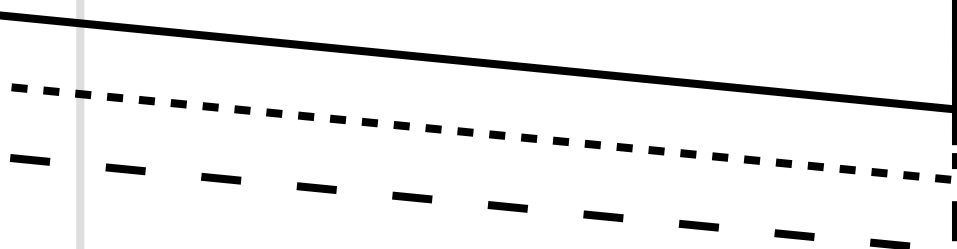
coupez le tissu à

pluie du tissu

Page 13







Creacel

ROBE A PLI CREUX

4
Manche

Coupez 2x dans le tissu

